

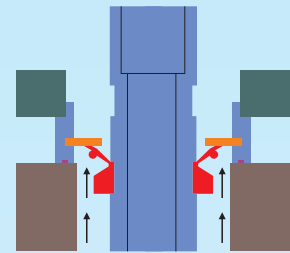


SEC SERIES

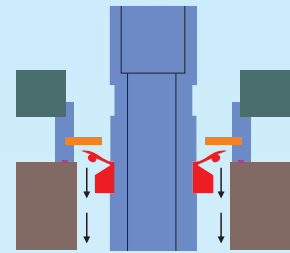
可空轉立式耐酸鹼泵 VERTICAL PUMP



化學氣體乾式軸封
Chemical vapor and dry vapor seal



停止中
Stop



運轉中
Running

CAPACITY:6.3-95m³/h

型號說明 MODEL IDENTIFICATION

SEC P 50 3 2 E 5

1 2 3 4 5 6 7

1. 機型編號 Model

SEC-圓盤可空轉立式耐酸鹼泵 Disc idling-type vertical pump

2. 泵體材質 Pump Body

P-PP(可以省略) F-PVDF E-CFRETFE

3. 入口口徑 Inlet Diameter

50-2" 65-2.5" 75-3" 100-4"

4. 馬力 Power

2-2HP 3-3HP 5-5HP 7-7.5HP 10-10HP 15-15HP

5. 極數 Pole

4-4P 2-2P

6. 密封材質 Seal

E-EPDM V-VITON N-NBR

7. 頻率 Frequency

5-50HZ 6-60HZ

SEC SERIES 可空轉立式耐酸鹼泵

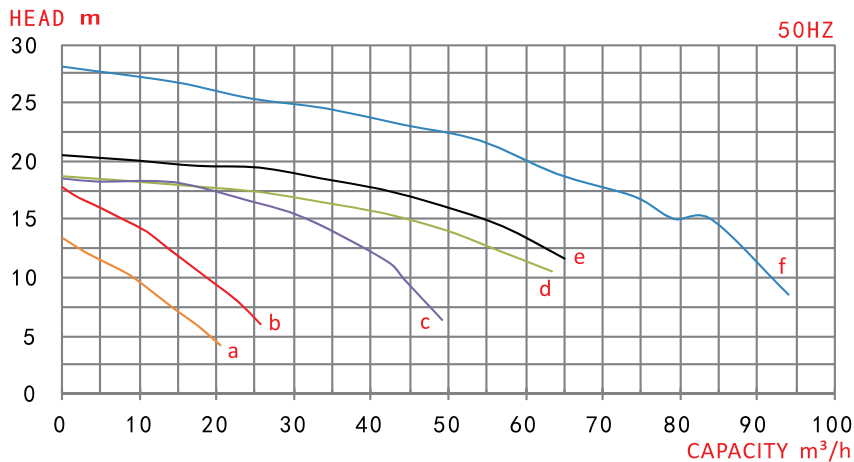
▶ 特點及優點

1. 採用FRPP/PVDF材質射出成型。耐酸鹼，抗腐蝕性。適用溫度：FRPP-65°C以下，PVDF-90°C以下。
2. 葉輪採用一體成型設計，機械强度高，使用壽命長。
3. 乾式軸封設計，防止酸氣進入馬達損壞培林。
4. 可空轉使用，絕不會因空運轉而損壞。
5. 可使用在含有結晶顆粒的液體。
6. 大圓盤可防止槽內蒸氣逸散污染環境。

Features and benefits

1. The pump is made by the injection molding of the FRPP/PVDF material, which is resistant to acid, alkaline and corrosion, with usage temperature of: Below 65°C for FRPP, below 90°C for PVDF.
2. The impeller is designed for whole casting, with high mechanical strength and long service life.
3. Dry shaft seal design, preventing acid gas from penetrating motor to damage the bearing.
4. Able to conduct idling operation and will never be damaged due to idle running.
5. Able to work with liquids containing crystallized particles.
6. Large disc can prevent steam diffusion of the tank from polluting the environment.

▶ 性能曲線圖 Performance curve graph



▶ 規格表 Specifications

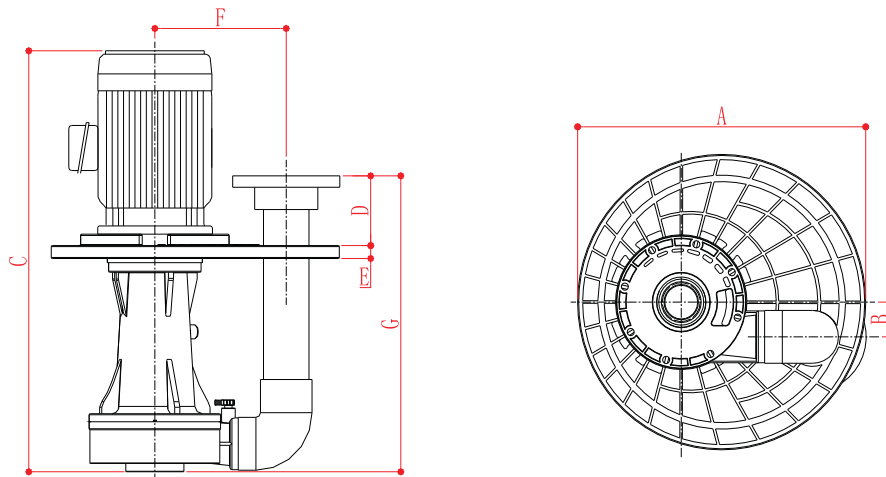
測試介質：清水 / 比重：1.0

Test medium: Water / Proportion: 1.0

型式Model	□徑 Diameter (In-out)	動力Power			曲線 Curve	50HZ		重量 Weight (kg)
		相數 Phase (Φ)	極數 Pole (P)	馬力 Power (HP)		流量 Capacity (m ³ /h)	揚程 Head (m)	
SEC 5022	2"x2"	3	2	2	a	6.3	11.0	30
						12.5	8.5	
						20.0	4.0	
SEC 5032	2"x2"	3	2	3	b	6.3	15.0	34
						12.5	13.0	
						25.0	6.0	
SEC 6552	2.5"x2.5"	3	2	5	c	12.5	18.0	45
						25.0	17.0	
						50.0	6.5	
SEC 6572	2.5"x2.5"	3	2	7.5	d	25.0	17.0	67
						50.0	14.0	
						64.0	10.5	
SEC 65102	2.5"x2.5"	3	2	10	e	25.0	19.5	80
						50.0	16.0	
						65.0	11.0	
SEC 100152	4"x4"	3	2	15	f	50.0	22.0	100
						75.0	17.0	
						95.0	8.5	

SEC SERIES 可空轉立式耐酸鹼泵

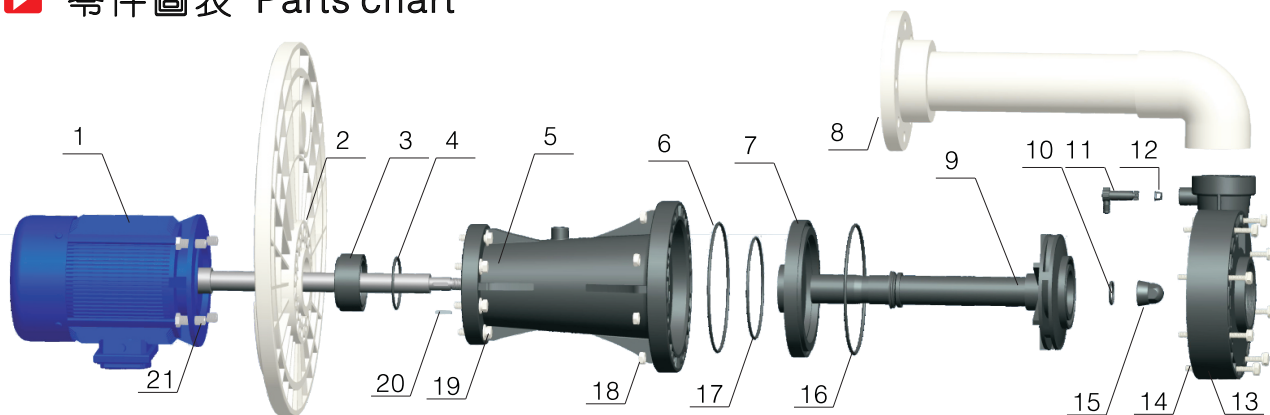
尺寸圖 Dimensions



Unit:mm

型式Model	A	B	C	D	E	F	G
SEC 5022	485	67	740	149	25	236	560
SEC 5032	485	67	755	149	25	236	560
SEC 6552	485	67	780	149	25	236	560
SEC 6572	570	67	840	149	25	270	560
SEC 65102	570	67	860	149	25	270	560
SEC 100152	625	67	890	149	25	270	560

零件圖表 Parts chart



NO. 名稱 PARTS

1. 電機 Motor
2. 馬達連接座 Motor Spacer
3. 液封座 Vapor Seal Seat
4. O環 Vapor Seal Seat O-Ring
5. 主體 Main Body
6. O環 O-Ring
7. 上座 Front Seat
8. 出口管 Outlet Pipe

NO. 名稱 PARTS

9. 葉輪 Impeller
10. 葉輪螺帽O環 Impeller Nut O-ring
11. 排氣閥 Exhaust Valve
12. 排氣閥墊片 Exhaust Valve Gasket
13. 前蓋 Front Cover
14. 螺絲 Screw Parts
15. 葉輪螺帽 Impeller Nut
16. O環 O-Ring

NO. 名稱 PARTS

17. O環 O-Ring
18. 螺帽 Nut
19. 螺絲 Main Body Screw
20. 葉輪鍵 Shaft Key
21. 螺絲 Motor Screw