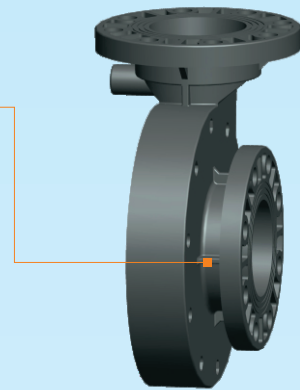




# NAG SERIES

## 非自吸式耐酸鹼泵浦 NON SELF-PRIMING PUMP



主體一體成型/決無任何焊接點  
Body is made by one piece  
Injected without welding

**CAPACITY:25-100m<sup>3</sup>/h**

### 型號說明 MODEL IDENTIFICATION

# NAG P 75 7 2 E S C H 5

1 2 3 4 5 6 7 8 9 10

#### 1.機型編號 Model

NAG-非自吸臥式泵 Non-self-priming horizontal pump

#### 2.泵體材質 Pump Body

P-PP(可以省略)

#### 3.入口口徑 Inlet Diameter

65-2.5" 75-3" 100-4"

#### 4.馬力 Power

5-5HP 7-7.5HP 10-10HP 15-15HP

#### 5.極數 Pole

4-4P 2-2P

#### 6.密封材質 Seal

E-EPDM V-VITON N-NBR

#### 7.固定環材質 Stationary Ring

C-Ceramic(陶瓷) S-Silicon(碳化硅)

#### 8.轉動環材質 Rotational Ring

C-Carbon(碳素) S-Silicon(碳化硅)

#### 9.彈簧材質 Spring

S-SUS 316 H-Hastelloy-C

#### 10.頻率 Frequency

5-50HZ 6-60HZ

# NAG SERIES

## 非自吸式耐酸鹼泵浦

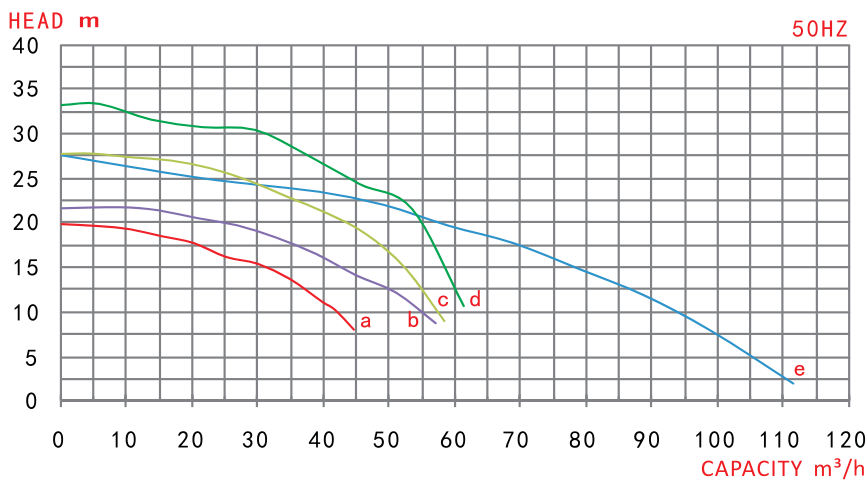
### ▶ 特點及優點

1. FRPP材質射出成型，耐酸鹼，抗腐蝕性，適用溫度65°C以下。
2. 結構簡單，組裝及維修方便，葉輪採用一體成型，壽命長、效率高。
3. 壓力大，獨特軸封設計，自冷式無須外加冷卻。
4. 適用於化學液體循環或輸送製程、電鍍、化工、皮革、染整廢水、廢氣處理等。

### Features and benefits

1. The pump is made by injection molding of the FRPP material, which is resistant to acid, alkaline and corrosion resistance with suitable usage temperature below 65°C.
2. Simple structure, easy assembly and repair, integrally molded impeller, long service life and high efficiency.
3. High pressure, unique shaft seal design, self-cooling design without the need of additional cooling.
4. It is applicable to chemical liquid circulation, or transportation process, electroplating, chemical, leather, dyeing and finishing wastewater and waste gas treatment, etc.

### ▶ 性能曲線圖 Performance curve graph



### ▶ 規格表 Specifications

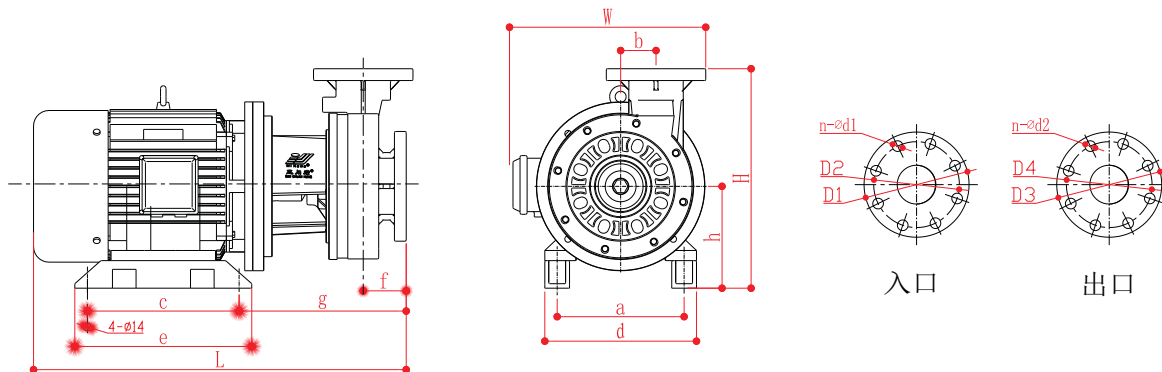
測試介質：清水 / 比重：1.0  
Test medium: Water / Proportion: 1.0

型式Model	□徑 Diameter (In-out)	動力Power			曲線 Curve	50HZ		重量 Weight (kg)
		相數 Phase (Φ)	極數 Pole (P)	馬力 Power (HP)		流量 Capacity (m³/h)	揚程 Head (m)	
NAG 6552	2.5"x2"	3	2	5	a	25.0 35.0 45.0	16.0 14.0 7.0	42
NAG 7552	3"x2.5"	3	2	5	b	25.0 40.0 50.0	20.0 15.0 12.0	55
NAG 7572	3"x2.5"	3	2	7.5	c	25.0 40.0 50.0	25.5 21.0 16.0	75
NAG 75102	3"x2.5"	3	2	10	d	25.0 40.0 50.0	30.0 26.0 23.0	80
NAG 100152	4"x4"	3	2	15	e	50.0 75.0 100.0	22.0 16.0 8.0	115

# NAG SERIES

## 非自吸式耐酸鹼泵浦

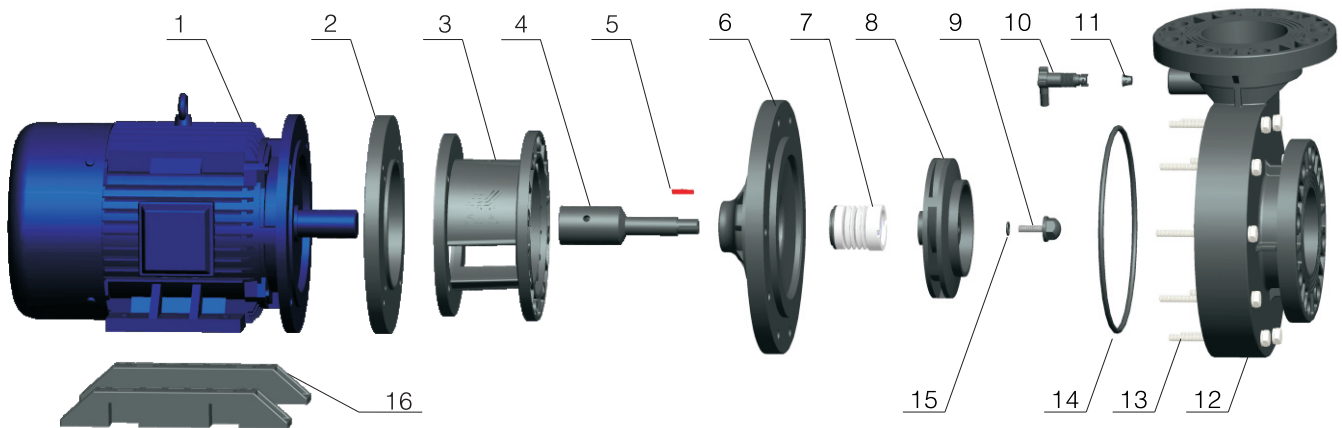
### ▶ 尺寸圖 Dimensions



Unit:mm

型式Model	L	W	H	a	b	c	d	e	f	g	h	D1	D2	n-Φd1	D3	D4	n-Φd2
NAG 6552	600	332	370	215	70	275	230	320	70	227	161	177	132	8-25x19	177	132	8-Φ25x19
NAG 7552	594	336	380	215	70	275	230	320	70	223	161	195	155	8-25x19	177	132	8-Φ25x19
NAG 7572	633	368	380	215	70	275	270	320	70	223	181	195	155	8-25x19	177	132	8-Φ25x19
NAG 75102	633	368	380	215	70	275	270	320	70	223	181	195	155	8-25x19	177	132	8-Φ25x19
NAG 100152	815	375	400	215	75	275	334	320	70	228	181	210	175	8-20	210	175	8-Φ20

### ▶ 零件圖表 Parts chart



#### NO. 名稱 PARTS

1. 電機 Motor
2. 法蘭盤 Flange Plate
3. 連接座 Connecting Base
4. 主軸 Main Shaft
5. 葉輪鍵 Shaft Key
6. 後封蓋 Rear Casing Cover

#### NO. 名稱 PARTS

7. 前軸封 Front Shaft Seal
8. 葉輪 Impeller
9. 葉輪螺帽 Impeller Nut
10. 排氣閥 Exhaust Valve
11. 排氣閥墊片 Exhaust Valve Gasket
12. 一體成型前蓋 Integrated Front Cover

#### NO. 名稱 PARTS

13. 螺栓 Bolt
14. 前蓋O環 Front Cover O-ring
15. 葉輪螺帽O環 Impeller Nut O-ring
16. 腳架 Foot Stand



# NAS SERIES

全新升級型  
「高效、節能」

## 非自吸式耐酸鹼泵浦 NON SELF-PRIMING PUMP



\*ENERGY-SAVING  
\*HIGH-EFFICIENCY  
CAPACITY:20-100m<sup>3</sup>/h

### 型號說明 MODEL IDENTIFICATION

# NAS P 75 7 2 E S C H 5

1 2 3 4 5 6 7 8 9 10

#### 1.機型編號 Model

NAS-非自吸臥式泵 Non-self-priming horizontal pump

#### 2.泵體材質 Pump Body

P-PP(可以省略)

#### 3.入口口徑 Inlet Diameter

65-2.5" 75-3" 100-4"

#### 4.馬力 Power

5-5HP 7-7.5HP 10-10HP 15-15HP 20-20HP

#### 5.極數 Pole

4-4P 2-2P

#### 6.密封材質 Seal

E-EPDM V-VITON N-NBR

#### 7.固定環材質 Stationary Ring

C-Ceramic(陶瓷) S-Silicon(碳化硅)

#### 8.轉動環材質 Rotational Ring

C-Carbon(碳素) S-Silicon(碳化硅)

#### 9.彈簧材質 Spring

S-SUS 316 H-Hastelloy-C

#### 10.頻率 Frequency

5-50HZ 6-60HZ

# NAS SERIES

## 非自吸式耐酸鹼泵浦

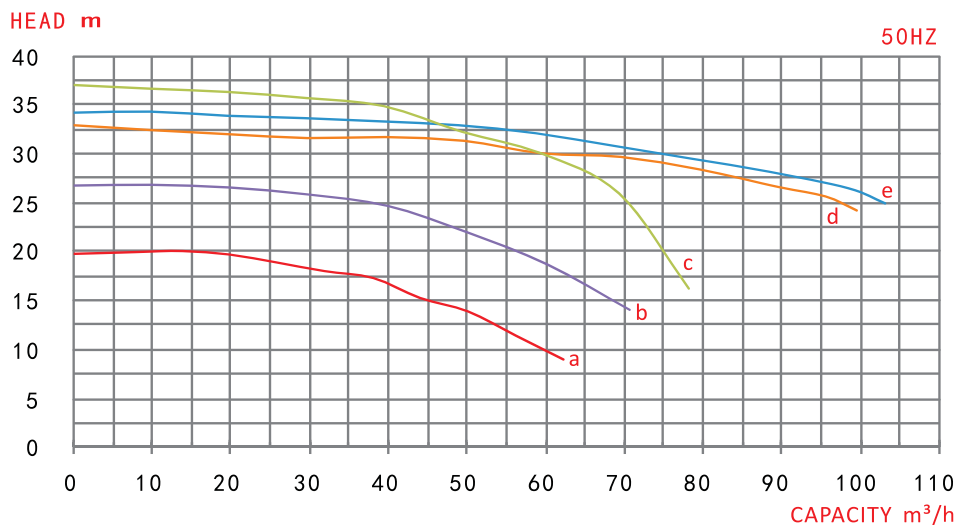
### ▶ 特點及優點

1. FRPP材質射出成型，耐酸鹼，抗腐蝕性，適用溫度65°C以下。
2. 結構簡單，組裝及維修方便，葉輪採用一體成型，壽命長、效率高。
3. 流量大，效率高，獨特軸封設計，自冷式無須外加冷卻。
4. 適用於化學液體循環或輸送製程、電鍍、化工、皮革、染整廢水、廢氣處理等。

### Features and benefits

1. The pump is made by injection molding of the FRPP material, which is resistant to acid, alkaline and corrosion resistance with suitable usage temperature below 65°C.
2. Simple structure, easy assembly and repair, integrally molded impeller, long service life and high efficiency.
3. Large flow, High-efficiency, unique shaft seal design, self-cooling design without the need of additional cooling.
4. It is applicable to chemical liquid circulation, or transportation process, electroplating, chemical, leather, dyeing and finishing wastewater and waste gas treatment, etc.

### ▶ 性能曲線圖 Performance curve graph



### ▶ 規格表 Specifications

測試介質：清水 / 比重：1.0

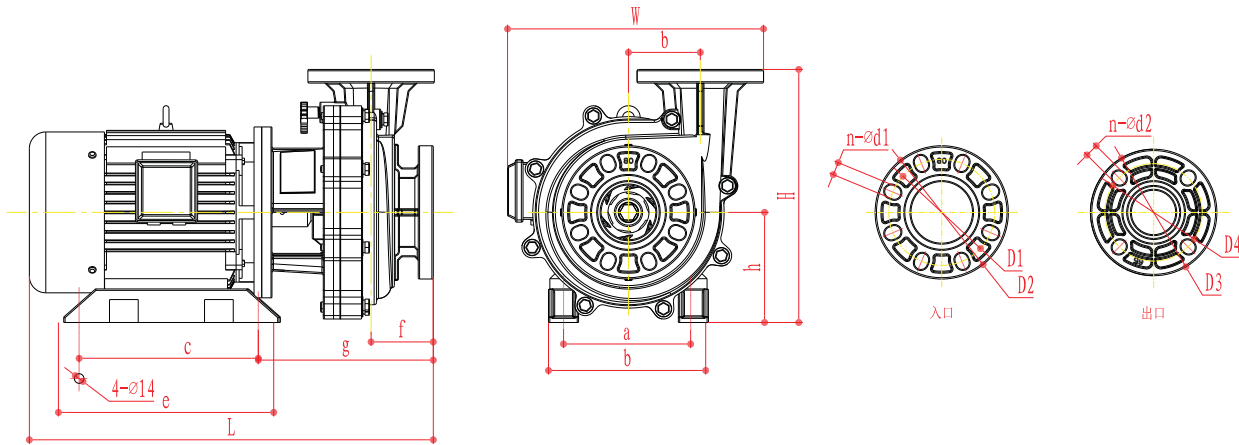
Test medium: Water / Proportion: 1.0

型式Model	口徑 Diameter (In-out)	動力Power			曲線 Curve	50HZ		重量 Weight (kg)
		相數 Phase (Φ)	極數 Pole (P)	馬力 Power (HP)		流量 Capacity (m³/h)	揚程 Head (m)	
NAS 7552	3"x2.5"	3	2	5	a	20.0 50.0 60.0	19.5 13.0 8.0	46.0
NAS 7572	3"x2.5"	3	2	7.5	b	40.0 50.0 60.0	24.0 21.0 17.5	68.0
NAS 75102	3"x2.5"	3	2	10	c	40.0 50.0 60.0	35.0 32.0 29.0	98.0
NAS 100152	4"x3"	3	2	15	d	60.0 80.0 100.0	29.5 27.6 23.0	135.0
NAS 100202	4"x3"	3	2	20	e	60.0 80.0 100.0	32.5 29.5 26.0	145.0

# NAS SERIES

## 非自吸式耐酸鹼泵浦

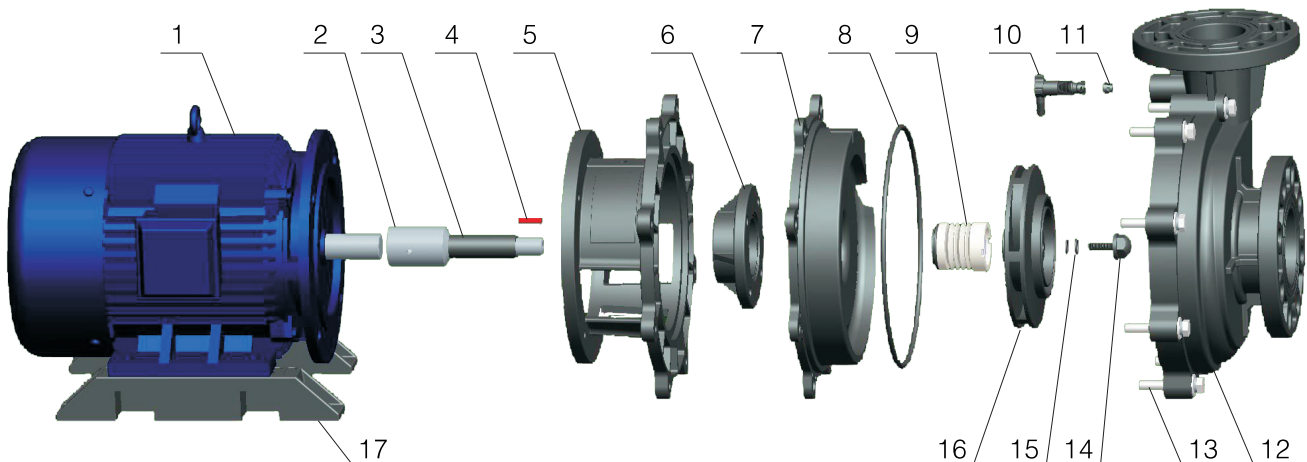
### 尺寸圖 Dimensions



Unit:mm

型式Model	L	W	H	a	b	c	d	e	f	g	h	D1	D2	n-φd1	D3	D4	n-φd2
NAS 7552	591	375	370	186	105	275	230	320	91	256	161	195	155	8-19x27	185	143	4-19x21.5
NAS 7572	591	440	390	216	105	275	260	320	91	288	181	195	155	8-19x27	185	143	4-19x21.5
NAS 75102	591	470	390	216	105	275	260	320	91	288	181	195	155	8-19x27	185	143	4-19x21.5
NAS 100152	832	470	470	254	125	400	324	460	105	338.5	230	220	177.5	8-19x21.5	200	155	8-19x24
NAS 100202	832	470	470	254	125	400	324	460	105	338.5	230	220	177.5	8-19x21.5	200	155	8-19x24

### 零件圖表 Parts chart



#### NO. 名稱 PARTS

1. 電機 Motor
2. 主軸 Main Shaft
3. 膠套筒 Rubber Sleeve
4. 葉輪鍵 Shaft Key
5. 連接座 Connecting Base
6. 後軸封 Rear Shaft Seal

#### NO. 名稱 PARTS

7. 後封蓋 Rear Casing Cover
8. 前蓋O環 Front Cover O-ring
9. 前軸封 Front Shaft Seal
10. 排氣閥 Exhaust Valve
11. 排氣閥墊片 Exhaust Valve Gasket
12. 一體成型前蓋 Integrated Front Cover

#### NO. 名稱 PARTS

13. 螺栓 Bolt
14. 葉輪螺帽 Impeller Nut
15. 葉輪螺帽O環 Impeller Nut O-Ring
16. 葉輪 Impeller
17. 腳架 Foot Stand