



# KD SERIES

## 同軸自吸式耐酸鹼泵浦 COAXIAL SELF-PRIMING PUMP



CAPACITY:25-65m<sup>3</sup>/h

### 型號說明 MODEL IDENTIFICATION

# KD P 75 7 2 E S C S 5

1 2 3 4 5 6 7 8 9 10

#### 1.機型編號 Model

KD-同軸自吸泵 Coaxial self-priming pump

#### 2.泵體材質 Pump Body

P-PP(可以省略) F-PVDF E-CFRETFE

#### 3.入口口徑 Inlet Diameter

75-3"

#### 4.馬力 Power

5-5HP 7-7.5HP 10-10HP

#### 5.極數 Pole

4-4P 2-2P

#### 6.密封材質 Seal

E-EPDM V-VITON N-NBR

#### 7.固定環材質 Stationary Ring

C-Ceramic(陶瓷) S-Silicon(碳化硅)

#### 8.轉動環材質 Rotational Ring

C-Carbon(碳素) S-Silicon(碳化硅)

#### 9.彈簧材質 Spring

S-SUS 316 H-Hastelloy-C

#### 10.頻率 Frequency

5-50HZ 6-60HZ

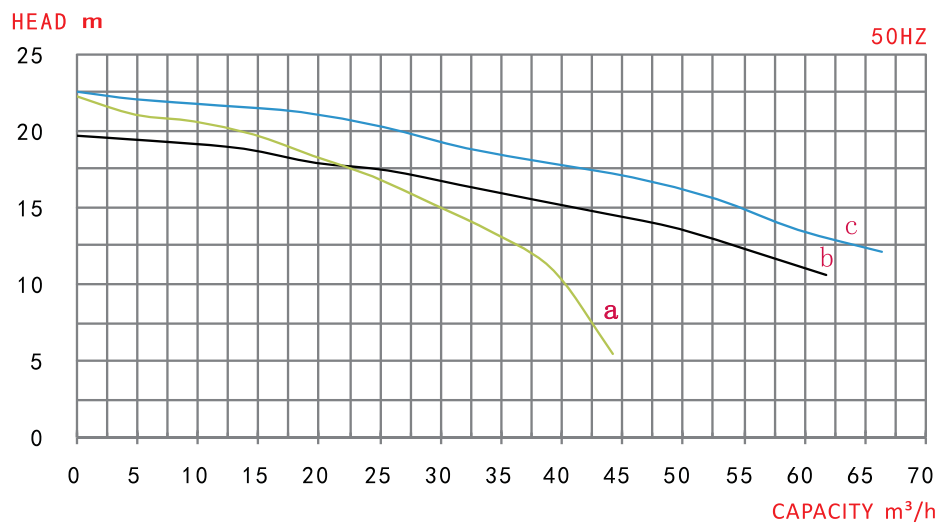
### ▶ 特點及優點

1. 採用FRPP、PVDF材料射出成型，抗腐蝕性強，依藥液酸鹼度不同選取材質。
2. 適用溫度：FRPP-65°C以下，PVDF-90°C以下。
3. 可選配自冷卻軸封，有效解決無水空運轉問題。

### Features and benefits

1. The pump is made by injection molding of FRPP/PVDF material, which is resistant to corrosion. The material is selected according to the PH value of the liquid.
2. Applicable temperature: Below 65°C for FRPP, below 90°C for PVDF.
3. The pump can choose equipped with self-cooling shaft seal, with the application of self-cooling design can avoid idle running.

### ▶ 性能曲線圖 Performance curve graph



### ▶ 規格表 Specifications

測試介質：清水 / 比重：1.0

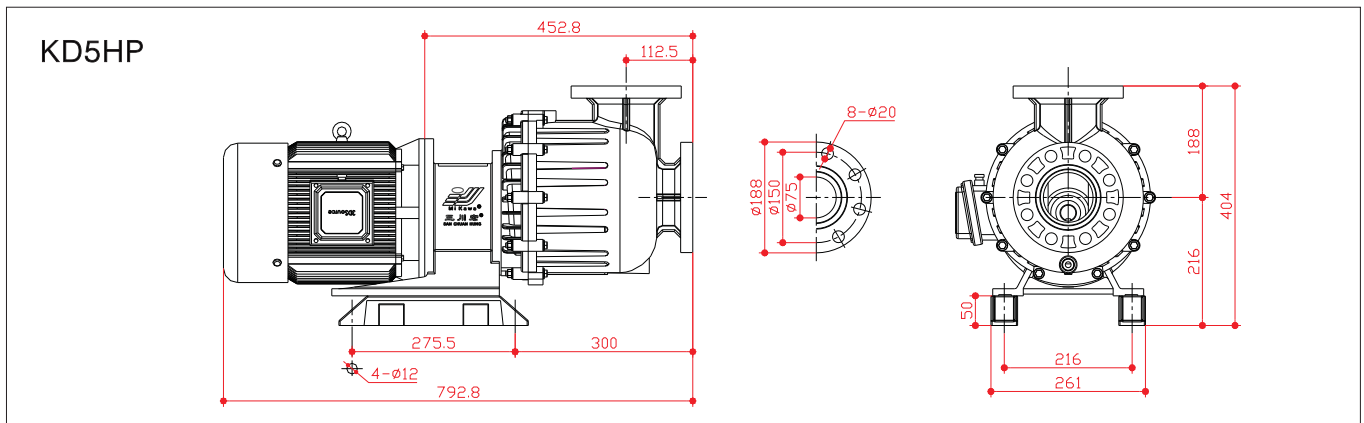
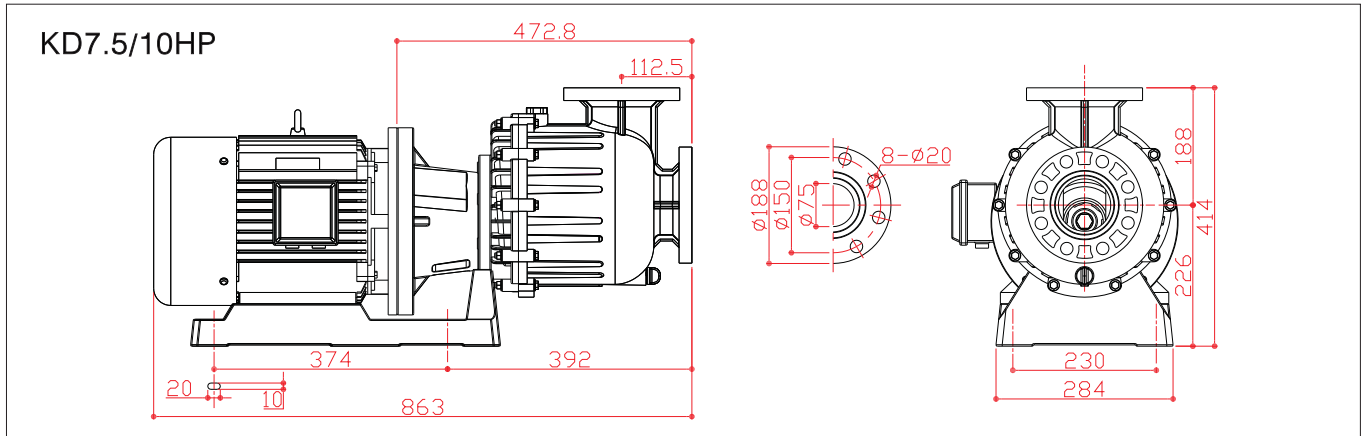
Test medium: Water / Proportion: 1.0

| 型式Model  | □徑<br>Diameter<br>(In-out) | 動力Power            |                   |                     | 曲線<br>Curve | 50HZ                     |                   | 重量<br>Weight<br>(kg) |
|----------|----------------------------|--------------------|-------------------|---------------------|-------------|--------------------------|-------------------|----------------------|
|          |                            | 相數<br>Phase<br>(Φ) | 極數<br>Pole<br>(P) | 馬力<br>Power<br>(HP) |             | 流量<br>Capacity<br>(m³/h) | 揚程<br>Head<br>(m) |                      |
| KD 7552  | 3"x3"                      | 3                  | 2                 | 5                   | a           | 25.0                     | 16.0              | 70.0                 |
|          |                            |                    |                   |                     |             | 40.0                     | 11.0              |                      |
|          |                            |                    |                   |                     |             | 45.0                     | 5.5               |                      |
| KD 7572  | 3"x3"                      | 3                  | 2                 | 7.5                 | b           | 25.0                     | 17.5              | 120.0                |
|          |                            |                    |                   |                     |             | 40.0                     | 15.0              |                      |
|          |                            |                    |                   |                     |             | 60.0                     | 10.5              |                      |
| KD 75102 | 3"x3"                      | 3                  | 2                 | 10                  | c           | 25.0                     | 20.0              | 140.0                |
|          |                            |                    |                   |                     |             | 50.0                     | 16.5              |                      |
|          |                            |                    |                   |                     |             | 65.0                     | 12.5              |                      |

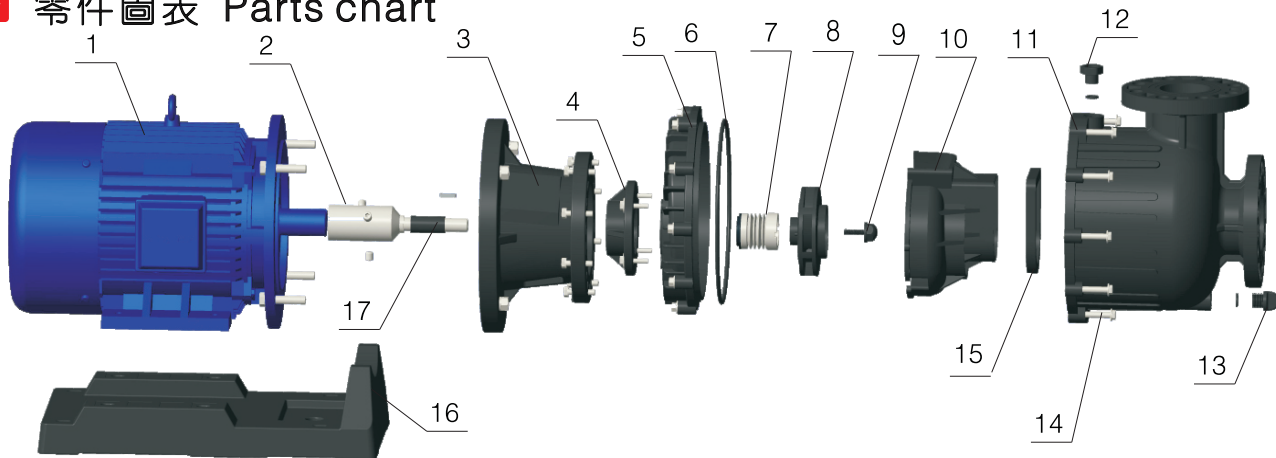
# KD SERIES

## 同軸自吸式耐酸鹼泵浦

### 尺寸圖 Dimensions



### 零件圖表 Parts chart



#### NO. 名稱 PARTS

1. 電機 Motor
2. 主軸 Main shaft
3. 連接座 Connecting Base
4. 後軸封 Rear Shaft Seal
5. 後封蓋 Rear Casing Cover
6. 封蓋O環 Rear Casing Cover O-ring

#### NO. 名稱 PARTS

7. 前軸封 Front Shaft Seal
8. 葉輪 Impeller
9. 葉輪螺帽 Impeller Nut
10. 中封蓋 Intermediate Casing Cover
11. 主體 Main Body
12. 注水蓋 Water Filling Nut

#### NO. 名稱 PARTS

13. 排水閥 Drain Nut
14. 螺絲 Screw Parts
15. 單向閥 One-way Valve
16. 底板 Footbase
17. 膠套筒 Rubber Sleeve