



KDN SERIES

全新升級型
「高效、節能」

同軸自吸式耐酸鹼泵浦 COAXIAL SELF-PRIMING PUMP



*ENERGY-SAVING
*HIGH-EFFICIENCY
CAPACITY:6.3-38m³/h

型號說明 MODEL IDENTIFICATION

KDN P 50 3 2 E S C S 5

1

2

3

4

5

6

7

8

9

10

1.機型編號 Model

KDN-同軸自吸泵 Coaxial self-priming pump

2.泵體材質 Pump Body

P-PP(可以省略) F-PVDF E-CFRETFE

3.入口口徑 Inlet Diameter

40-1.5" 50-2"

4.馬力 Power

0-1/2HP 1-1HP 2-2HP 3-3HP 5-5HP

5.極數 Pole

4-4P 2-2P

6.密封材質 Seal

E-EPDM V-VITON N-NBR

7.固定環材質 Stationary Ring

C-Ceramic(陶瓷) S-Silicon(碳化硅)

8.轉動環材質 Rotational Ring

C-Carbon(碳素) S-Silicon(碳化硅)

9.彈簧材質 Spring

S-SUS 316 H-Hastelloy-C

10.頻率 Frequency

5-50HZ 6-60HZ

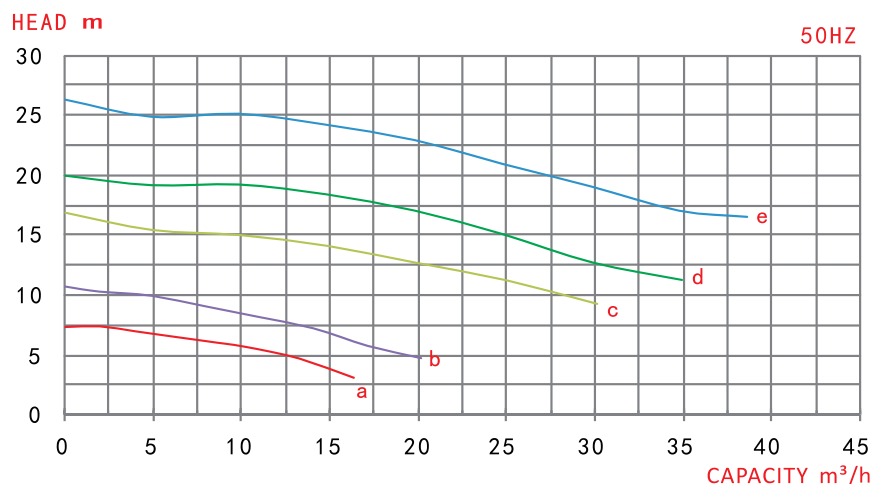
▶ 特點及優點

1. 採用FRPP、PVDF材料射出成型，抗腐蝕性強，依藥液酸鹼度不同選取材質。
2. 適用溫度：FRPP-65°C以下，PVDF-90°C以下。
3. 經水力優化，以“節能減碳”為出發點，效率提升約10-20%，在輸出相同水功率下可以節省0.5-1.0KW電能。
4. 可選配自冷卻軸封，有效解決無水空運轉問題。

Features and benefits

1. The pump is made by injection molding of FRPP/PVDF material, which is resistant to corrosion. The material is selected according to the PH value of the liquid.
2. Applicable temperature: Below 65°C for FRPP, below 90°C for PVDF.
3. The efficiency of the pump can be increased by about 10% to 20% and can save 0.5-1KW power.
4. The pump can choose equipped with self-cooling shaft seal, with the application of self-cooling design can avoid idle running.

▶ 性能曲線圖 Performance curve graph



▶ 規格表 Specifications

測試介質：清水 / 比重：1.0

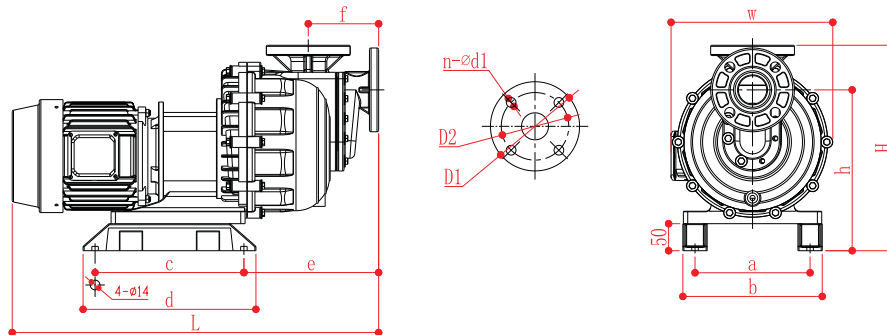
Test medium: Water / Proportion: 1.0

型式Model	□徑 Diameter (In-out)	動力Power			50HZ			重量 Weight (kg)
		相數 Phase (Φ)	極數 Pole (P)	馬力 Power (HP)	曲線 Curve	流量 Capacity (m³/h)	揚程 Head (m)	
KDN 4002	1.5"x1.5"	3	2	0.5	a	6.3	6.0	24.0
						12.5	4.5	
						16.0	3.0	
KDN 4012	1.5"x1.5"	3	2	1	b	6.3	9.0	26.0
						12.5	7.0	
						20.0	4.5	
KDN 4022	1.5"x1.5"	3	2	2	c	12.5	14.0	33.0
						20.0	12.5	
						30.0	9.0	
KDN 5032	2"x2"	3	2	3	d	12.5	19.0	42.0
						25.0	15.0	
						35.0	11.0	
KDN 5052	2"x2"	3	2	5	e	12.5	25.0	68.0
						25.0	21.0	
						38.0	16.5	

KDN SERIES

同軸自吸式耐酸鹼泵浦

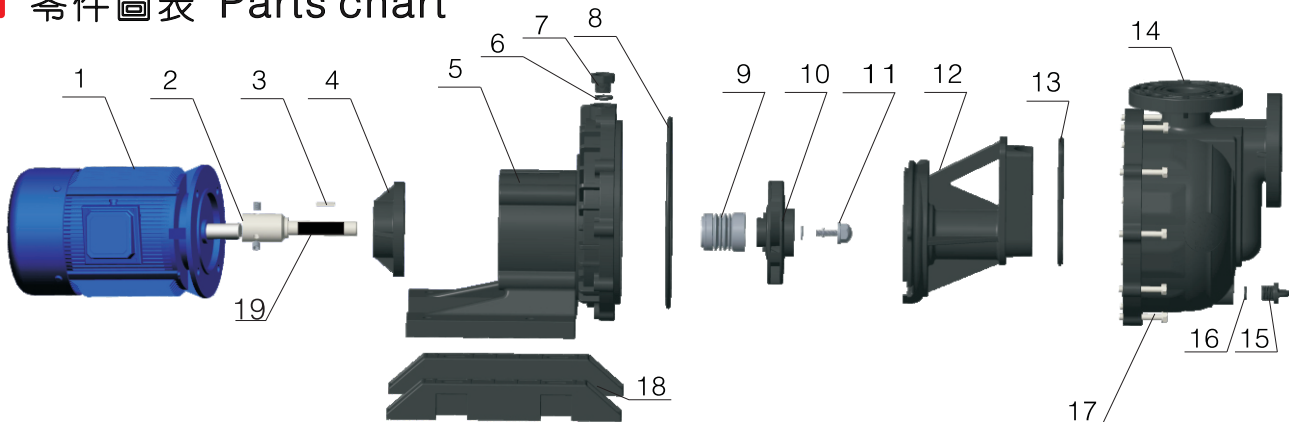
▶ 尺寸圖 Dimensions



Unit:mm

型式Model	L	W	H	a	b	c	d	e	f	h	D1	D2	n-d1
KDN 4002	640	295	370	208	253	275	320	269	130	298	140	105	4-φ19
KDN 4012	656	295	370	208	253	275	320	269	130	298	140	105	4-φ19
KDN 4022	665	295	380	208	253	275	320	269	130	298	155	120	4-φ19
KDN 5032	665	295	380	208	253	275	320	269	130	298	155	120	4-φ19
KDN 5052	790	295	380	208	253	275	320	269	130	298	155	120	4-φ19

▶ 零件圖表 Parts chart



NO. 名稱 PARTS

1. 電機 Motor
2. 主軸 Main Shaft
3. 葉輪鍵 Shaft Key
4. 後軸封 Rear Shaft Seal
5. 一體成型腳座 Integrated Footbase
6. 注水蓋O環 Water Filling Nut O-Ring
7. 注水蓋 Water Filling Nut

NO. 名稱 PARTS

8. 封蓋O環 Rear Casing Cover O-ring
9. 前軸封 Front Shaft Seal
10. 葉輪 Impeller
11. 葉輪螺帽 Impeller Nut
12. 中封蓋 Intermediate Casing Cover
13. 單向閥 Gasket
14. 主體 Main Body

NO. 名稱 PARTS

15. 排水閥 Drain Nut
16. 排水閥O環 Drain Nut O-Ring
17. 螺絲 Screw Parts
18. 腳架 Foot Stand
19. 膠套筒 Rubber Sleeve



KD SERIES

同軸自吸式耐酸鹼泵浦 COAXIAL SELF-PRIMING PUMP



CAPACITY:25-65m³/h

型號說明 MODEL IDENTIFICATION

KD P 75 7 2 E S C S 5

1 2 3 4 5 6 7 8 9 10

1.機型編號 Model

KD-同軸自吸泵 Coaxial self-priming pump

2.泵體材質 Pump Body

P-PP(可以省略) F-PVDF E-CFRETFE

3.入口口徑 Inlet Diameter

75-3"

4.馬力 Power

5-5HP 7-7.5HP 10-10HP

5.極數 Pole

4-4P 2-2P

6.密封材質 Seal

E-EPDM V-VITON N-NBR

7.固定環材質 Stationary Ring

C-Ceramic(陶瓷) S-Silicon(碳化硅)

8.轉動環材質 Rotational Ring

C-Carbon(碳素) S-Silicon(碳化硅)

9.彈簧材質 Spring

S-SUS 316 H-Hastelloy-C

10.頻率 Frequency

5-50HZ 6-60HZ

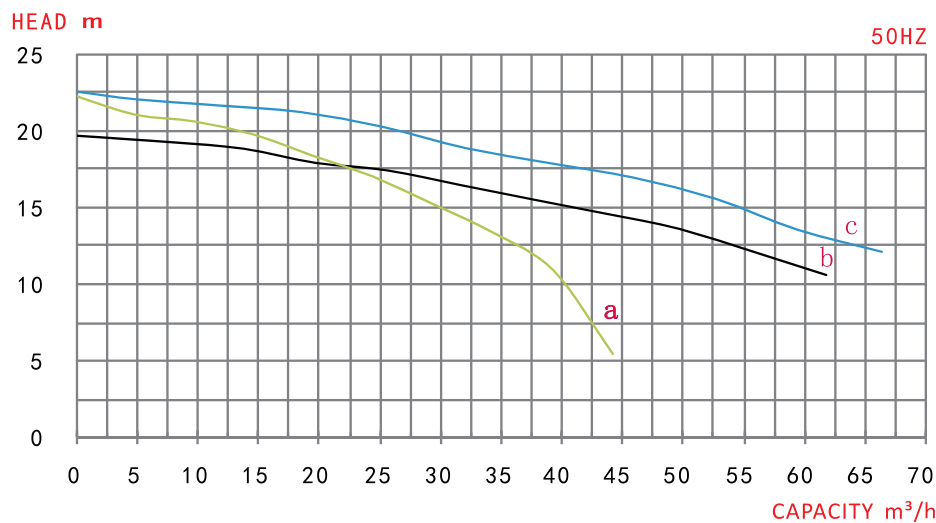
▶ 特點及優點

1. 採用FRPP、PVDF材料射出成型，抗腐蝕性強，依藥液酸鹼度不同選取材質。
2. 適用溫度：FRPP-65°C以下，PVDF-90°C以下。
3. 可選配自冷卻軸封，有效解決無水空運轉問題。

Features and benefits

1. The pump is made by injection molding of FRPP/PVDF material, which is resistant to corrosion. The material is selected according to the PH value of the liquid.
2. Applicable temperature: Below 65°C for FRPP, below 90°C for PVDF.
3. The pump can choose equipped with self-cooling shaft seal, with the application of self-cooling design can avoid idle running.

▶ 性能曲線圖 Performance curve graph



▶ 規格表 Specifications

測試介質：清水 / 比重：1.0

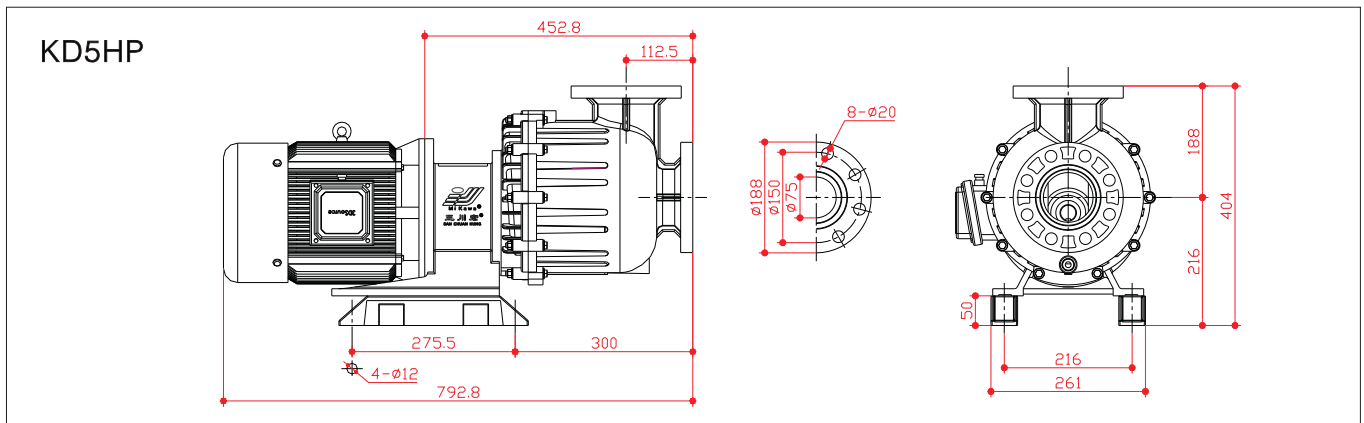
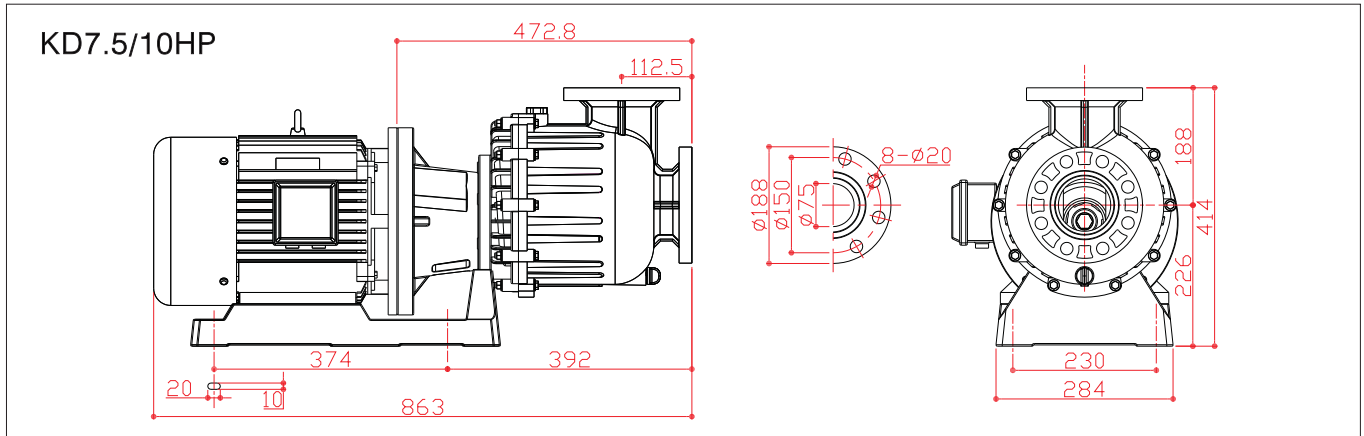
Test medium: Water / Proportion: 1.0

型式Model	□徑 Diameter (In-out)	動力Power			曲線 Curve	50HZ		重量 Weight (kg)
		相數 Phase (Φ)	極數 Pole (P)	馬力 Power (HP)		流量 Capacity (m³/h)	揚程 Head (m)	
KD 7552	3"x3"	3	2	5	a	25.0	16.0	70.0
						40.0	11.0	
						45.0	5.5	
KD 7572	3"x3"	3	2	7.5	b	25.0	17.5	120.0
						40.0	15.0	
						60.0	10.5	
KD 75102	3"x3"	3	2	10	c	25.0	20.0	140.0
						50.0	16.5	
						65.0	12.5	

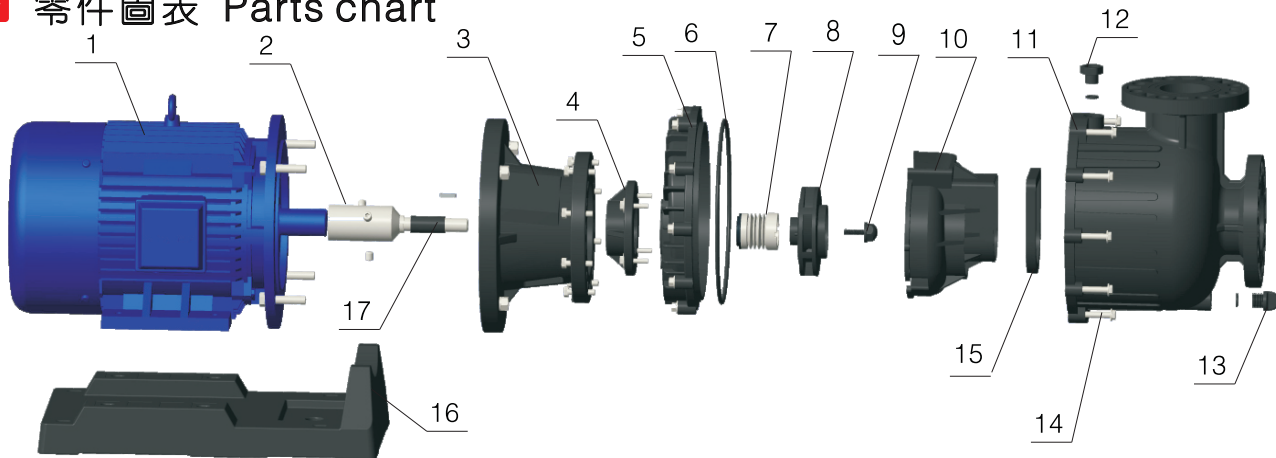
KD SERIES

同軸自吸式耐酸鹼泵浦

尺寸圖 Dimensions



零件圖表 Parts chart



NO. 名稱 PARTS

1. 電機 Motor
2. 主軸 Main shaft
3. 連接座 Connecting Base
4. 後軸封 Rear Shaft Seal
5. 後封蓋 Rear Casing Cover
6. 封蓋O環 Rear Casing Cover O-ring

NO. 名稱 PARTS

7. 前軸封 Front Shaft Seal
8. 葉輪 Impeller
9. 葉輪螺帽 Impeller Nut
10. 中封蓋 Intermediate Casing Cover
11. 主體 Main Body
12. 注水蓋 Water Filling Nut

NO. 名稱 PARTS

13. 排水閥 Drain Nut
14. 螺絲 Screw Parts
15. 單向閥 One-way Valve
16. 底板 Footbase
17. 膠套筒 Rubber Sleeve