

# FILTERING MEDIUM

## 過濾介質

### ▶ 過濾機濾材組 Filter material group

依藥液性質，選擇濾材種類。(Select filter material according to chemical liquid)



濾芯鎖螺型(Lock filter):B TYPE



濾芯壓板型(Pressure filter):H TYPE



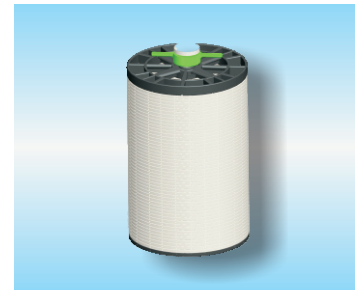
楊桃型(Bellow type):K TYPE



濾紙型(Paper type):P TYPE



袋濾型(Bag type):D TYPE



濾布型(Cloth type):C TYPE

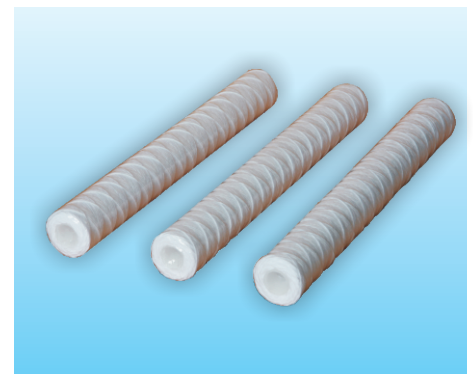
### ▶ 線繞式精密濾芯 Filter cartridge of winding type

#### 特點

- 1.線繞式濾芯是由具有良好過濾特性的紡織纖維紗，在纏繞時經由控制其鬆緊度及稀鬆密度，製成不同緊密的濾芯。
- 2.能有效去除液體中所殘留的顆粒雜質，懸浮物質。
- 3.具有壓力損失少，清洗方便，使用壽命長等特點。

#### FEATURES

- 1.Precision filter cartridge of winding type with better dope-dyed fiber to produce the core filters of different density by controlling the capability of tight-fitting.
- 2.Eliminated the impurities and suspended substance of the fluid exactly.
- 3.The characteristic are less pressure leakage ,easy clean and long service life.



#### 技術規格 Specifications

- 1.尺寸(Dimension)-外徑(Outer diameter): $\Phi 63 \pm 2\text{mm}$ 、 $\Phi 60 \pm 2\text{mm}$ ；  
內徑 (Inner diameter): $\Phi 28$ 、 $\Phi 30$ ；長度(Length):10"、20"、30"、40"。
- 2.精度(Precision):1-100  $\mu\text{m}$ ；耐溫(Temperature): $\leq 60^\circ\text{C}$ ；  
耐壓(Pressure): $\leq 0.5\text{Mpa}$ ；過濾量(Filter Capacity) : $\leq 200\text{l/min}$ 。

# FILTERING MEDIUM

## 過濾介質

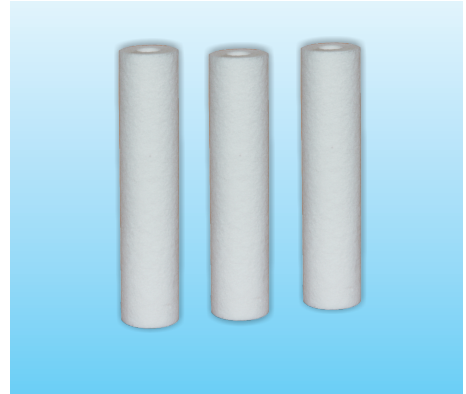
### ▶ 熔噴式濾芯 PP melt spinning cartridge

#### 特點

1. PP纖維直接熔吹黏合成型，不需添加任何黏著劑，使用時不會有任何溶出物。
2. 雙層纖維細度結合（內層纖維細、外層纖維粗），濾芯結構由內而外漸進變鬆，能有效的降低壓差且保持穩定的過濾效果，因此濾芯的雜質容量大、使用壽命長。
3. 具有壓力損失少，清洗方便，使用壽命長等特點。

#### FEATURES

1. PP fiber can be melted to molding directly and no adhesive is needed, and no soluble substance will occur during usage.
2. The density structure of double pieces fiber (internal thin fiber, external coarse fiber), and the structure of fiber element becomes loose from internal to external gradually that can decrease voltage and stable filter capability. Thus the impurities quantity of the filter cartridge is heavy and the life span would be longer.
3. The characteristic are less pressure leakage, easy clean and long service life.



#### 技術規格 Specifications

1. 尺寸(Dimension)-外徑(Outer diameter):  $\Phi 63 \pm 2\text{mm}$ 、 $\Phi 60 \pm 2\text{mm}$ ；  
內徑(Inside diameter):  $\Phi 28$ 、 $\Phi 30$ ；長度(Length): 10"、20"、30"、40"。
2. 精度(Precision): 1-100  $\mu\text{m}$ ；耐溫(Temperature):  $\leq 60^\circ\text{C}$ ；  
耐壓(Pressure):  $\leq 0.4\text{Mpa}$ 。

### ▶ 活性炭濾芯 Activated carbon filter cartridge

#### 特點

1. 活性炭濾芯為在深層結構，具有過濾與淨化雙層功能，使用時不需添加助濾劑，也不需進行破處理後的過濾。因活性炭濾芯不會稀出纖維或其他物質，在用于電鍍液淨化時不會使鍍層出現針孔或脆性。

#### FEATURES

1. Activated carbon of the filter cartridge is deep structure, with double functions of filtration and purification. When using, no filter aid is needed, nor does the filtration after carbon treatment. Due to activated carbon filter cartridge doesn't produce fiber or other substance, when it is used for plating liquid purifying, pinhole and fragility can be avoided on the clad layer.

#### 技術規格 Specifications

1. 尺寸(Dimension)-外徑(Outer diameter):  $\Phi 65 \pm 2\text{mm}$ ；  
內徑(Inside diameter):  $\Phi 30$ ；長度(Length): 10"、20"、30"、40"。
2. 精度(Precision): 1-100  $\mu\text{m}$ ；耐溫(Temperature):  $\leq 52^\circ\text{C}$ ；  
耐壓(Pressure):  $\leq 0.4\text{Mpa}$ ；過濾量(Filter Capacity):  $\leq 300\text{l/h}$ 。

